



December 15, 2021

Open access to the next generation of wildfire risk models and information

CEC EPIC Symposium

Primary Funding Provided by:

California Energy Commission – EPIC Program (EPC-18-026)

Alex Horangic

Commission Agreement Manager  
California Energy Commission

David Saah, PhD

Principal Investigator  
University of San Francisco and  
Spatial Informatics Group

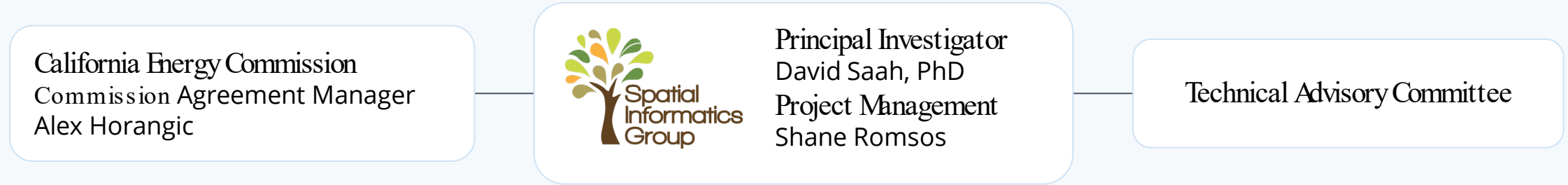
Shane Romsos, MSc

Project Manager  
Spatial Informatics Group

# Research Collaborators



# HIGHLIGHT OF PROJECT TASKS



### Extreme Weather & Wildfire

**Lead - Janice Coen, PhD**

**Tasks**

- Historical fire weather analysis
- Weather station optimization model & tool
- Pilot test of upper air profiler

**NCAR** | NATIONAL CENTER FOR ATMOSPHERIC RESEARCH  
**UNIVERSITY OF SAN FRANCISCO**

### Fuel Mapping & Fire Physics

**Lead – Scott Stephens, PhD**

**Tasks**

- Small- and large-scale fire physics experiments
- Tree mortality mapping and fuels recruitment projections
- Fuels characterization and mapping

**Berkeley**  
UNIVERSITY OF CALIFORNIA

### Wildfire Forecasting

**Lead – Chris Lautenberger, PhD**

**Tasks**

- Develop models to provide near-term fire forecast at a fine scale
- Produce decision support tools
- Cost-benefit analysis

**REAX**  
ENGINEERING

### Climate Change & Fire Projections

**Lead – Leroy Westerling, PhD**

**Tasks**

- Develop coupled statistical/dynamical fire-climate-vegetation models
- Forward concepts for decision support tools
- Support California’s 5th climate assessment

**UNIVERSITY OF CALIFORNIA**  
**MERCED**

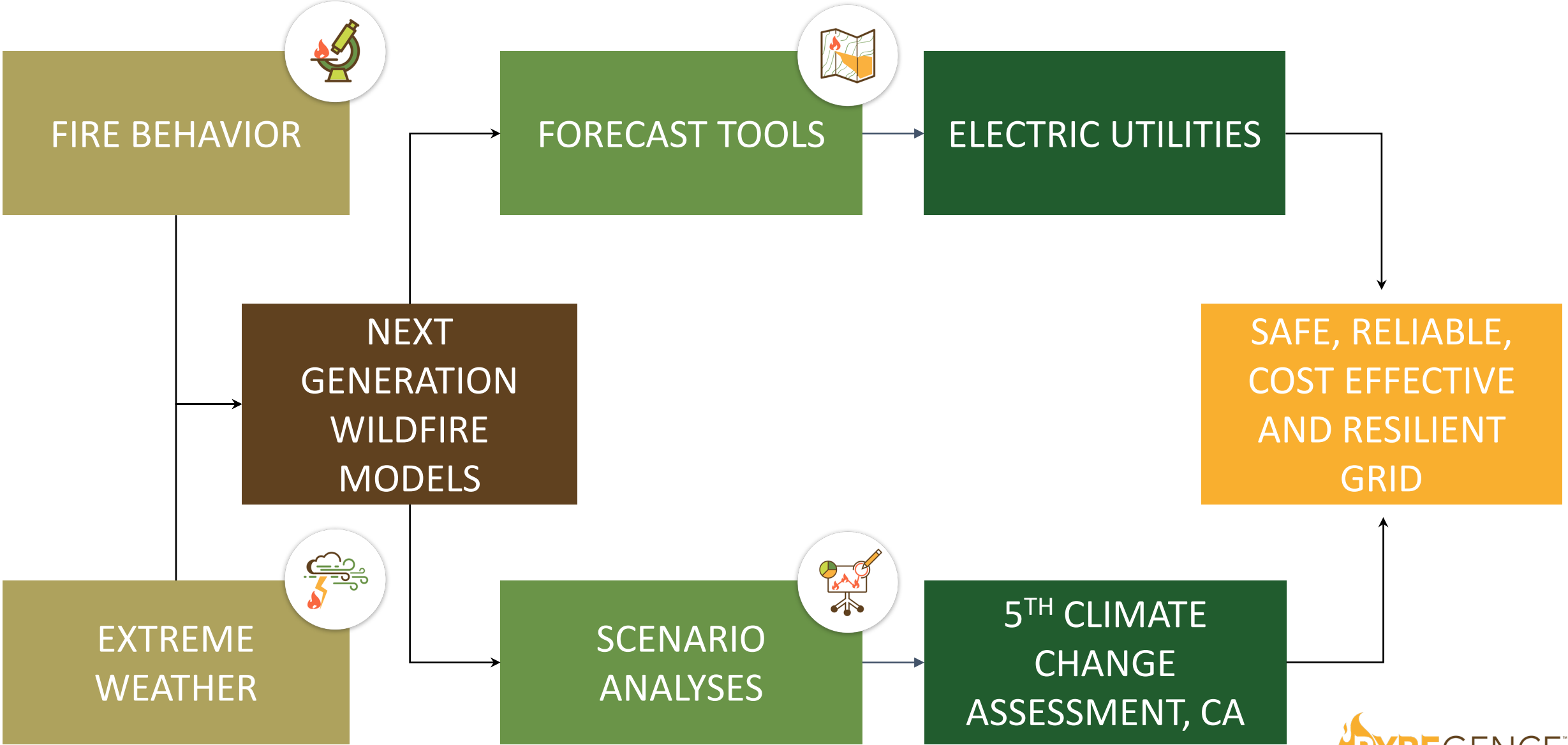
Science

Models

Tools

Implement

Impact



Project Website - <https://pyregence.org/>

Near-term Fire Risk Forecast Tool (PyreCast) - <https://pyrecast.org/>

Project Contacts –

David Saah, Principal Investigator - [dsaah@sig-gis.org](mailto:dsaah@sig-gis.org)

Shane Romsos, Project Manager – [sromsos@sig-gis.com](mailto:sromsos@sig-gis.com)

