

# Cal-Adapt Analytics Engine.

---

Primary Funding Provided by

California Energy Commission – EPIC Program  
(EPC-20-007)

Managed by: Susan Wilhelm, Ph.D., M.S.E. (CEC)

Chief Advisor: Mike Mastrandrea, Ph.D. (CEC/Stanford)

---



**Berkeley**  
UNIVERSITY OF CALIFORNIA



**Spatial Informatics Group**



**Owen Doherty, Ph.D.**  
Principal Investigator  
Eagle Rock Analytics



**Mark Koenig**  
Project Manager  
Eagle Rock Analytics

# Expanded Cal-Adapt Enterprise

DATA

## Projections



SIO/UCSD and UCLA are generating the next generation climate projections. (EPC-20-006)

## Historical Products



Historical climate products. SIO/UCSD and UCLA (PIR-19-007)

## Future Climate Research



5<sup>th</sup> Assessment and other future research work.

ACCESS

## Cal-Adapt: Analytics Engine



Computing resources on top of climate data information for technical users. ERA, UCB, SIG, E3 (EPC-20-007)

## Near Real Time Historical Data Platform



Recent weather and past weather observations and information. ERA and LBNL (PIR-19-006)

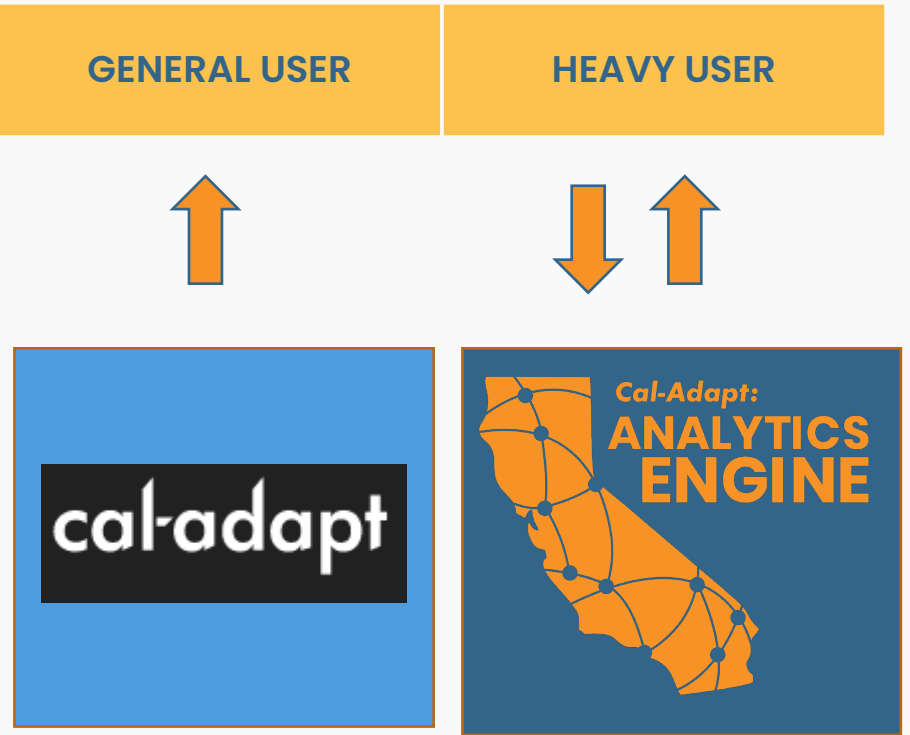
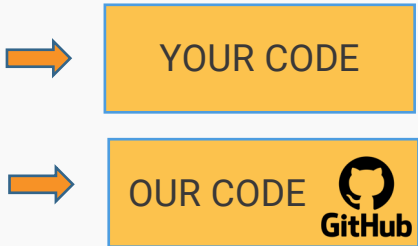
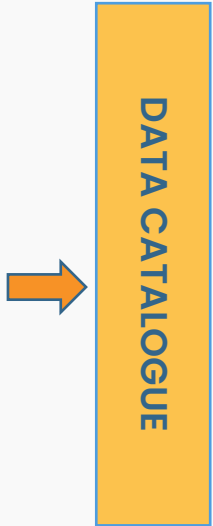
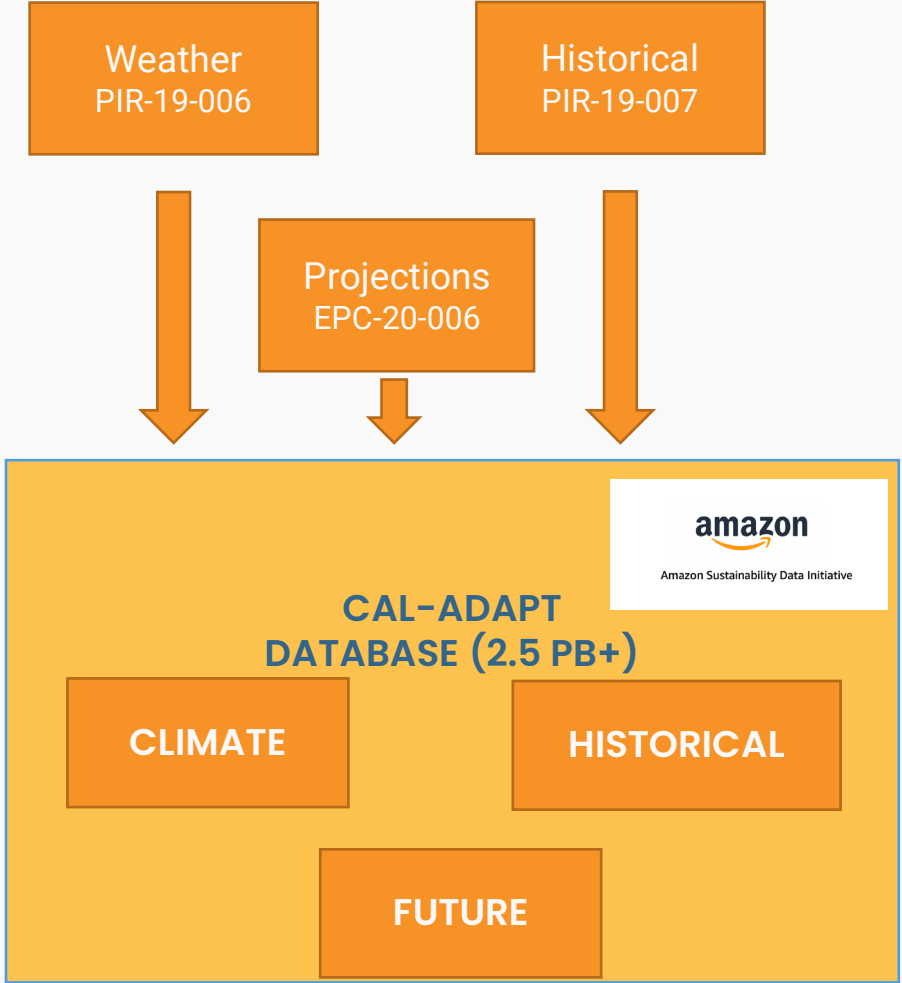
## Cal-Adapt



Cal-Adapt.org has visualizations and download capacities. UCB/GIF (EPC-17-033, PIR-17-012)



# CAL-ADAPT ANALYTICS ENGINE



# KEY UPCOMING ACTIVITIES



**March 2022**

Soft launch of the Analytics Engine Platform with some analytic notebooks and some projections.



**Late April / Early May**

Hands on training on how to use and introducing folks to the data products.



**September 2022**

Full launch of the Analytics Engine Platform, analytic notebooks and most of projections.

# Is the Analytics Engine for me?

**YES!**

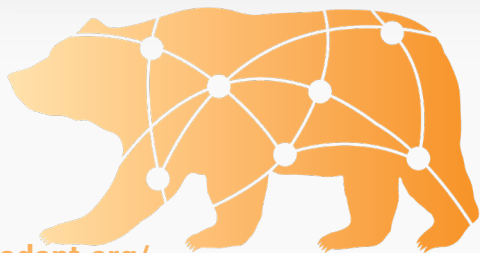
Contact Us:

analytics@cal-adapt.org

jbui@sig-gis.com

acsaydah@sig-gis.com

owen@eaglerockanalytics.com



**Cal-Adapt:**  
**ANALYTICS  
ENGINE**

[analytics.cal-adapt.org/](http://analytics.cal-adapt.org/)

## Thanks To Our Funders:

FUNDING PROVIDED BY THE  
**CALIFORNIA  
ENERGY  
COMMISSION**



**amazon**

Amazon Sustainability Data Initiative

## Thanks To Our Partners & Supporters:

**amazon**  
Amazon Sustainability Data Initiative

**PYREGENCE**

**SOUTHERN CALIFORNIA  
EDISON**  
An EDISON INTERNATIONAL® Company

**PG&E**

**PACIFICORP**

**SDGE**



**aws**